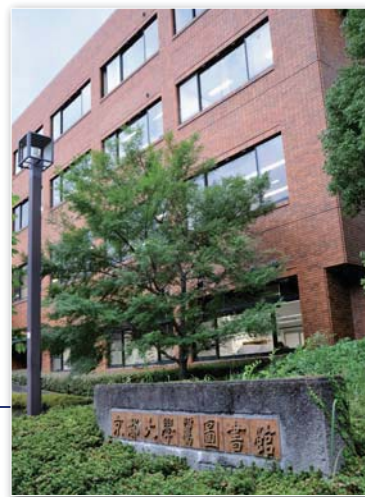


2011

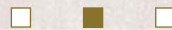
京都大学図書館機構 概要

Outline of the Kyoto University Library Network



The Kyoto University Library Network's mission, which is based on the basic principle of Kyoto University, is playing a role in the academic information infrastructure worthy of a foundation of the world's highest level of education and research. To support the education and research in Kyoto University, and also to contribute to the academic community inside and outside of Japan, we constantly collect, classify and preserve resources of academic information as human intellectual property, and concurrently with transmitting associated information, we research and develop the best advanced information service at all times, offering it subsequently.

Therefore, we, The Kyoto University Library Network, aim to realize the following goals:



- 1 To support education and research with all the functions of the university's libraries, we give top priority to the understanding of what the students and the teaching staff need, and then fulfilling it.
- 2 To develop our collections and systems of information service as the academic information infrastructure, we choose, collect and classify academic information appropriately, and conduct necessary research and development, and then offer the best way to access them.
- 3 We preserve and transmit global intellectual results which are created in Kyoto University day after day.
- 4 We equip retention management systems to make human intellectual property, which is possessed by Kyoto University, available for the future.
- 5 We construct high quality user support systems for pleasant utilization of academic information.
- 6 To offer effective and pleasant utilization of academic information for users of the library, we keep improving the skills and motivation of the staff and attempt to enrich the equipment and the facility.
- 7 The organizations, which constitute to the Kyoto University Library Network, reinforce the partnership with each other, and also with internal organizations associating with us.
- 8 We contribute to society and local communities, through cooperation with the other libraries inside and outside of Japan.

CONTENTS

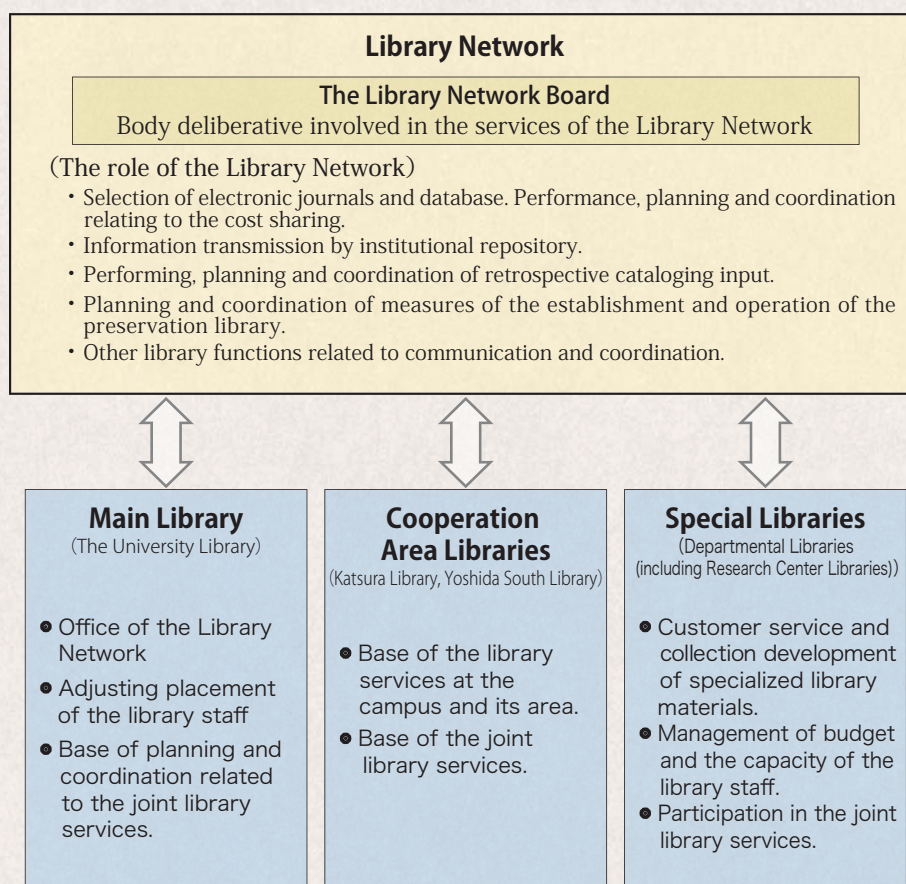
Outline of the Kyoto University Library Network 2011

I. Mission Statement	1
II. New Vision	2
III. Configuring the Library Network	3
IV. Chronological Table	5
V. Statistics of Collection	6
VI. Activities of the Library Network	7
VII. Kyoto University Libraries	17

The New Vision is based on the mission statement, has a prospect of the appropriate state of the Kyoto University Libraries over 10 years, and also aims to define the business objectives. It was under review from August 2006, and until being approved by the Library Network Board on December 18th, 2009.

■ The 4 basic goals

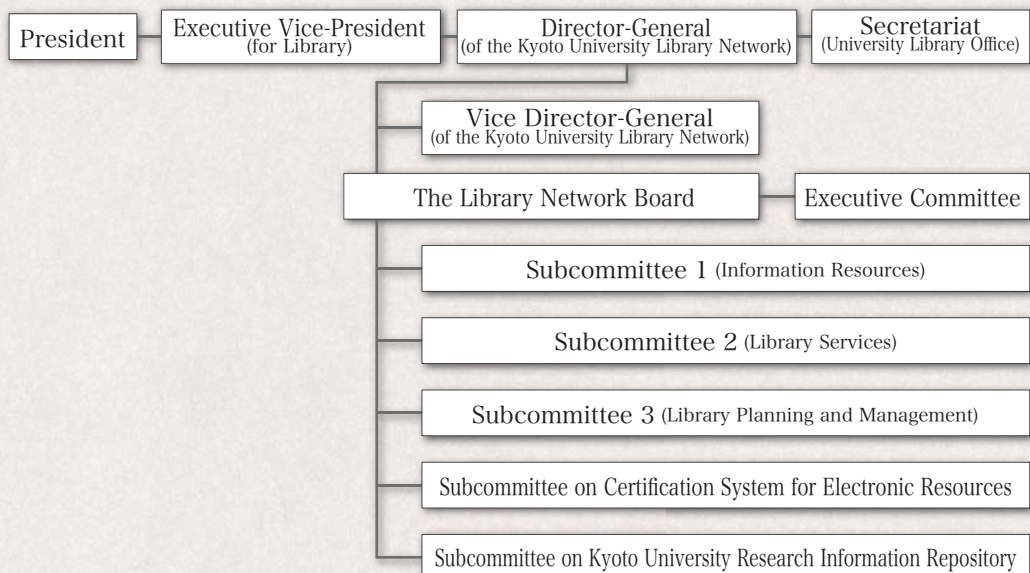
1. Maintain the library network.
2. Improve the skills and strengthen the cooperation of the Library staff.
3. Secure stable financial resources and build a systematic collection.
4. Improve the quantity and the quality of the library facilities.



■ Goals of the next 10 years

1. Development of academic information resources: Security of budget. Development of a book collection.
2. Improvement of the library services: Development of a library network.
3. Transmission of intelligence results: The operation of institutional repository.
4. Preservation and management of intellectual property: The investment of the electronic library and preservation facilities instruction.
5. Customer support: Building user systems and literacy
6. Development of human resources: Training the library staff and strengthening the cooperation.
7. Organizational strengthening: Improvement of functions of the Library Network and cooperation.
8. Outreach promotion: Exchange and philanthropy.

1 Organization chart



* Director-General serving as Main Library Director.

* Configuration of the Library Network Board

The Library Network Board is administrated by a Director-General (Chairman), an Executive Vice-President (for Library), a Vice Director-General, Uji Library Director, representatives from departments, Director Library Administration, and Professor deemed necessary by the President.

* Executive Committee

The Executive Committee is administrated by a Director-General, an Executive Vice-President (for Library), a Vice Director-General, Uji Library Director, subcommittee chairman, Director of Library Administration and Professor deemed necessary by a Director-General.

2 List of former library directors

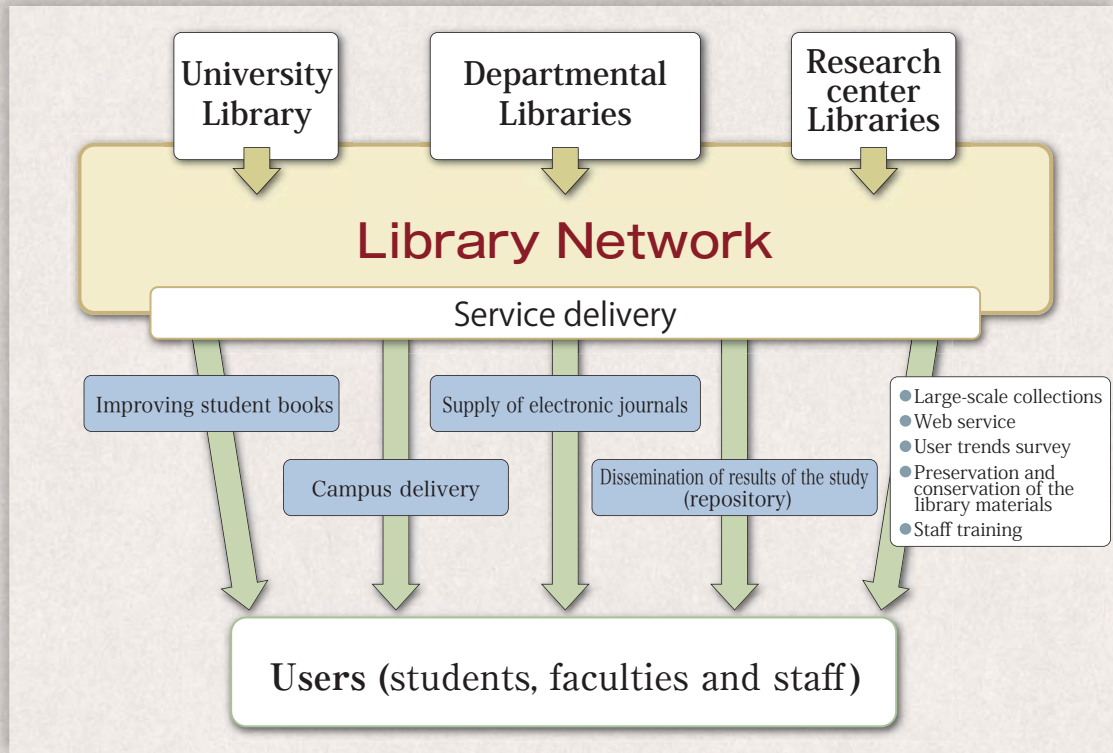
■ Director-General of Library Network (Director of University Library)

	Name	Inauguration ~ Retirement
1st	Yuzo Onishi (Faculty of Engineering)	2005/ 4 /1~2008/ 9 /30
	Yuzo Onishi (Executive Vice-President / Acting Director)	2008/10/1~2008/10/31
2nd	Joji Fujii (Faculty of Letters)	2008/11/1~2011/ 3 /31
3rd	Nobuo Hayashi (Faculty of Law)	2011/ 4/ 1~

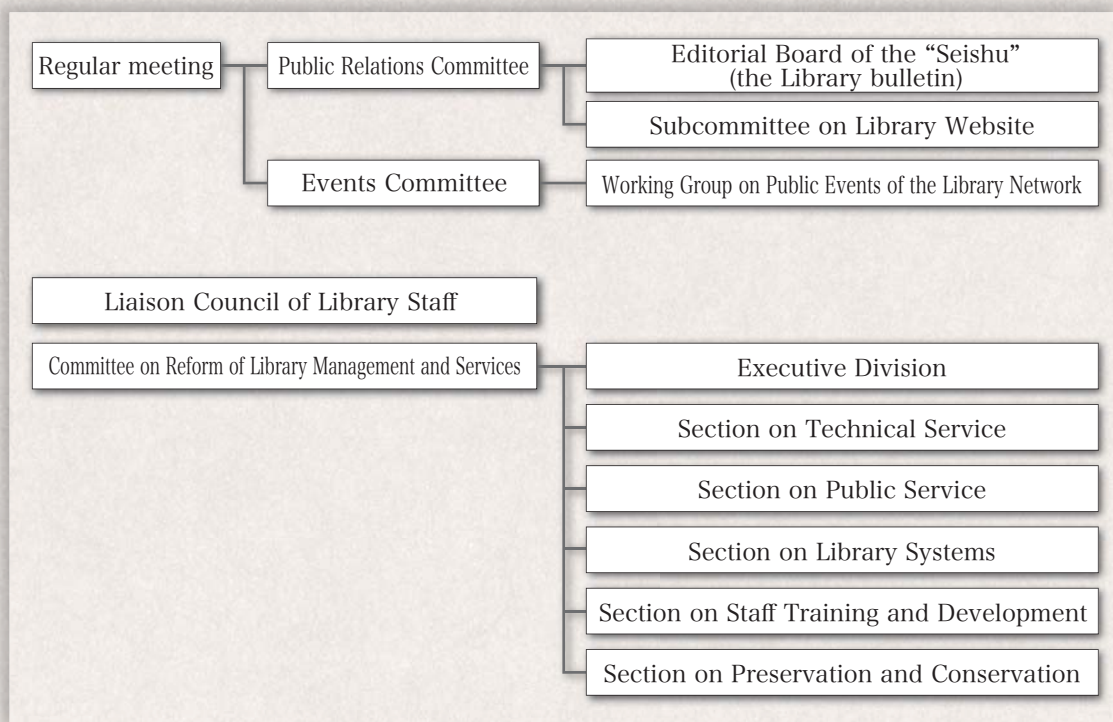
■ Vice Director-General of Library Network

	Name	Inauguration ~ Retirement
1st	Kimio Morimune (Faculty of Economics)	2005/ 6 / 1 ~2006/3/31
2nd	Tomohiro Okada (Faculty of Economics)	2006/ 4 / 1 ~2008/9/30
3rd	Tomohiro Okada (Faculty of Economics)	2008/12/16~2011/3/31
4th	Takashi Hikihara (Faculty of Engineering)	2011/ 4 / 1 ~

3 Library Network



4 Library Network Related Organization



Meiji era
▼

- 1897 Jun. ▶ Kyoto Imperial University was founded. The University Library was founded by Kyoto Imperial University.
- 1899 Dec. ▶ The University Library (The reading room) opened. (11th is the anniversary of the founding The University Library.)
- 1908 Dec. ▶ “The University Library Board Regulations” was established.

Heisei era
▼

- 2003 Jul. ▶ Policy Board was established in The University Library Board. (~2004 March)
- Dec. ▶ The Library Improvements Committee WG (Chair: Vice President, Kinda) was established in Deans and Directors Meeting
- 2004 Mar. ▶ As reported by the Library Improvements Committee WG, Dean and Directors Meeting was approved “Kyoto University Library Network” (tentative name) and “Kyoto University Library Network Board” (tentative name).
- Apr. ▶ “The Library Network Board” was established. (“The University Library Board Regulations” was abolished, and “Regulations of Kyoto University Library Administrative Committee” was established.)
- Jun. ▶ “The Library Network Regulations Committee WG” was established in “The Library Network Board”. (Chair: Maruyama) (~2005 January)
- 2005 Apr. ▶ Kyoto University Library Network was began.
The Subcommittee1, the Subcommittee2 and the Subcommittee3 were established.
- May. ▶ “The Subcommittee regarding the Way of the Branch” was established.
- 2006 Apr. ▶ “Subcommittee on Certification System for Electronic Resources” was established.
- May. ▶ “Campus Delivery Service” was started. (Transition to private carries from July 2007)
- Jun. ▶ Research Information Repository was published on a trial basis. (Officially launched in October).
- 2007 Mar. ▶ Public testings of the electronic journals and database authentication system was started. (This operation from April)
“Mission Statement” was enacted.
- Apr. ▶ “The Operation Center for Foreign Periodicals” was established.
The measures to strengthen the infrastructure budget for the Library Network.
- 2008 Mar. ▶ “Draft of New Vision” was published.
- Apr. ▶ The cost of electronic journals was transferred into the budget for common cost.
Subcommittee on Kyoto University Research Information Repository was established.
(Institutional Repository Committee:2005~2007: was reorganized.)
- Dec. ▶ User survey was conducted.
- 2009 Dec. ▶ “New Vision” was approved.

(As of Mar.31, 2011)

Section	Acquisition in FY 2010			Holdings			the total of entering cataloging information		
	Japanese Books	Foreign Books	Total	Japanese Books	Foreign Books	Total	Japanese Books	Foreign Books	Total
Kyoto University Library (Main Library)	11,552	3,041	14,593	614,537	254,781	869,318	462,465	205,616	668,081
Uji Library of Kyoto University	478	879	1,357	12,387	55,446	67,833	10,612	39,822	50,434
Graduate School / Faculty of Letters	12,114	5,869	17,983	632,912	406,792	1,039,704	420,244	390,770	811,014
Graduate School / Faculty of Education	2,810	917	3,727	94,149	66,686	160,835	90,664	62,259	152,923
Graduate School / Faculty of Law	4,199	4,741	8,940	299,081	386,256	685,337	227,203	289,008	516,211
Graduate School / Faculty of Economics	5,805	2,537	8,342	279,507	254,416	533,923	256,452	234,463	490,915
Graduate School / Faculty of Science	1,636	3,883	5,519	45,966	189,578	235,544	37,280	163,200	200,480
Graduate School / Faculty of Medicine	1,635	1,345	2,980	90,168	153,570	243,738	83,831	140,229	224,060
Graduate School / Faculty of Pharmaceutical Sciences	365	88	453	11,424	26,989	38,413	11,272	26,355	37,627
Graduate School / Faculty of Engineering	2,292	1,834	4,126	140,478	207,093	347,571	121,961	170,111	292,072
Graduate School / Faculty of Agriculture	1,752	783	2,535	144,282	126,183	270,465	97,726	80,233	177,959
Graduate School of Human and Environmental Studies / Faculty of Integrated Human Studies	7,208	3,526	10,734	307,442	267,497	574,939	285,840	230,523	516,363
Graduate School of Energy Science	65	43	108	4,370	5,120	9,490	4,305	5,127	9,432
Graduate School of Asian and African Area Studies	484	3,944	4,428	13,431	87,994	101,425	13,172	87,434	100,606
Graduate School of Informatics	820	804	1,624	17,333	55,145	72,478	16,674	54,609	71,283
Graduate School of Biostudies	0	0	0	54	60	114	30	55	85
Graduate School of Global Environmental Studies	410	311	721	2,543	2,165	4,708	2,544	2,164	4,708
Graduate School of Government	121	31	152	1,040	194	1,234	1,040	194	1,234
Graduate School of Management	171	70	241	1,114	401	1,515	1,114	401	1,515
Institute for Research in Humanities	4,344	1,008	5,352	492,167	86,655	578,822	223,974	80,801	304,775
Institute for Frontier Medical Sciences	0	88	88	442	4,634	5,076	84	783	867
Institute for Virus Research	0	19	19	305	3,326	3,631	297	2,776	3,073
Institute for Economic Research	215	1,041	1,256	40,888	38,662	79,550	40,888	38,662	79,550
Yukawa Institute for Theoretical Physics	201	1,489	1,690	9,472	86,232	95,704	6,850	76,949	83,799
Research Institute for Mathematical Sciences	133	1,606	1,739	7,327	83,871	91,198	7,070	80,439	87,509
Research Reactor Institute	275	723	998	15,011	37,012	52,023	15,005	36,872	51,877
Primate Research Institute	170	329	499	7,575	17,523	25,098	7,536	17,558	25,094
Center for Southeast Asian Studies	548	5,256	5,804	27,791	146,789	174,580	24,745	114,417	139,162
Radioisotope Research Center	17	9	26	169	62	231	169	62	231
Environment Preservation Center	15	87	102	628	1,466	2,094	265	1,439	1,704
International Center	35	27	62	40	27	67	35	27	62
Center for the Promotion of Excellence in Higher Education	54	2	56	2,606	1,016	3,622	2,601	1,015	3,616
Field Science Education and Research Center	125	34	159	14,012	8,584	22,596	6,469	5,086	11,555
Radiation Biology Center	8	0	8	510	2,036	2,546	448	2,080	2,528
Center for Ecological Research	97	209	306	8,765	6,359	15,124	8,737	6,371	15,108
Academic Center for Computing and Media Studies	1	5	6	5,932	12,720	18,652	3,869	7,562	11,431
Kokoro Research Center	10	8	18	124	170	294	103	170	273
Wildlife Research Center	0	0	0	41	0	41	41	0	41
Kyoto University Health Service	0	0	0	7	15	22	0	0	0
Kyoto University Archives	0	0	0	696	0	696	696	0	696
Center for Integrated Area Studies	355	573	928	406	41,404	41,810	5,068	21,877	26,945
Research International Division	0	0	0	606	47	653	606	47	653
Total	60,520	47,159	107,679	3,347,738	3,124,976	6,472,714	2,499,985	2,677,566	5,177,551

Note: Number of Uji Library holdings including Institute for Chemical Research, Institute of Advanced Energy, Research Institute for Sustainable Humanosphere and Disaster Prevention Research Institute.

Collection development

Stable supply of electronic journals

Equipment of large-scale collections

Enrichment of books for students

Stable supply of electronic journals

At the present day, electronic journals are necessary information sources serving as a lifeline for research. However, basically those are offered with a charge, and the price of both electronic and print products is showing a tendency to rise every year.

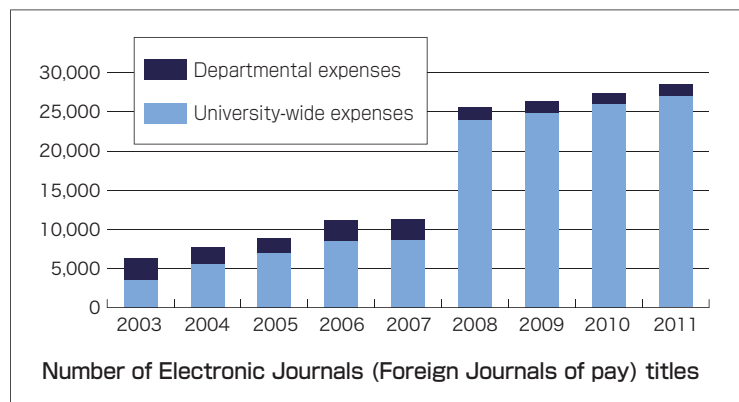
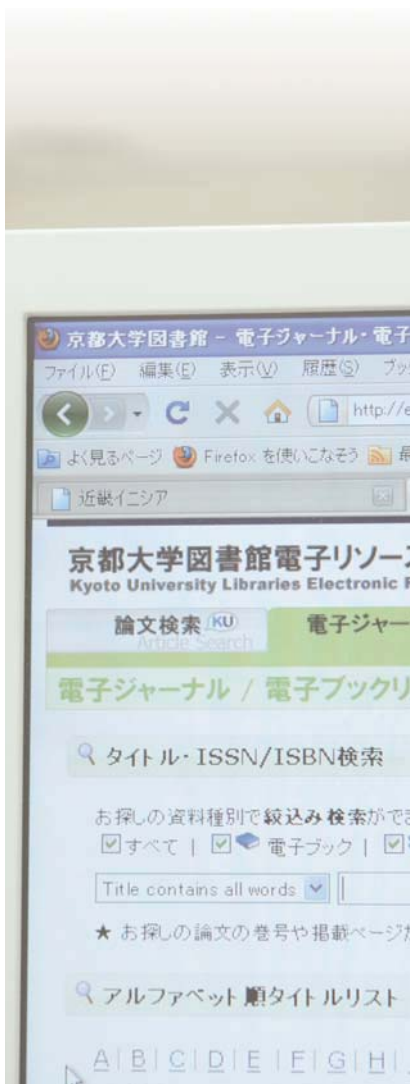
To keep a stable supply of electronic journals, the Library Network has repeatedly considered laying out an outline of a system of guarantees on expenses. We have enforced the followings since 2008;

- Shifting from “a principle of printed Journals” to “a principle of electronic journals”
- Journals which have been designated as objects for collaboration are available only as electronic journals accessible to all students
- Costs are charged by the expenses of the whole university and the expenses of the department sharing.
- The cost of the department sharing is calculated by adding inclination to expense ratio of education and research foundation.
- The subscription of print journals is left to each department’s discretion.

Furthermore, we are planning to apply more appropriate ways of sharing costs from 2011. For instance, a degree of availability is added by calculating the cost of the department sharing.

Consequently, the numbers of electronic journals which are available in whole campus with a charge have increased from 11,060 titles (2007) to 28,000 titles (2011). If free open access journals are added to this number, the number of electronic journals is more than 60,000 titles (2011). We have offered a list of all electronic journals on our website for practical use.

We expect that the demand for electronic journals is going to increase hereafter. Our tasks are expanding accessible titles including electronic journals published in Japan, and securing a budget.





Equipment of large-scale collections

A large-scale collection consists of materials collected by budgetary appropriation from the Ministry of Education, Culture, Sports, Science & Technology, which was provided to all national universities' libraries for the sake of sharing intellectual property with researchers inside and outside of the university. However, because the budgetary appropriation has been abolished since 2002, there was no

way to equip a large-scale collection.

Therefore, for the sake of provision of a large-scale collection that is difficult to purchase by each department and appropriate for sharing, the Library Network has conducted an investigation into request from each department and also applied for the university-wide expenses (expenses of equipment) since 2007.

Purchase Materials of 2010

“Royal Society of Chemistry Journals Archive 1841-2004” (e-journal back files)

“National Diet Library collection published early Showa Digital Library Edition Integration (education)” (in Japanese, DVD-ROM, Graduate School of Education Collection)

“British Periodicals Collection I & II” (online database)

Enrichment of books for students

Enrichment of book collections for students bears an important role in the provision of the educational environment which promotes self-learning. This is declared as the University's medium-term goals and plan.

We hold up a goal to offer a book for each student, and bearing in mind the

importance of new books, we have collected basic study books from all fields proportionally.

We arrange these books at the Kyoto University Library and the Library of the Graduate School of Human and Environmental Studies and the Faculty of Integrated Human Studies, which is frequently used by undergraduates.

FY	Number of books purchased for students	Number of students	Number of purchases per student
2005	11,995	13,254	0.91
2006	12,648	13,278	0.95
2007	12,695	13,381	0.95
2008	17,093	13,399	1.28
2009	14,859	13,417	1.11
2010	14,784	13,473	1.10

Collection development

Stable supply of electronic journals

Equipment of large-scale collections

Enrichment of books for students



Offer of access

Promoting the online catalog data input project for the whole university

The common course for the whole university: "Introduction to Information Retrieval"

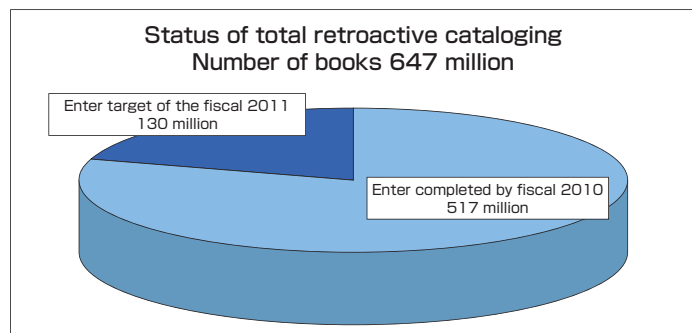


Promoting the online catalog data input project for the whole university

The Kyoto University has since its foundation collected and preserved precious library materials for 110 years. The number of books in the collection is 6,470,000 volumes and it is the third largest collection in Japan, the first being the National Diet Library and the second being the Tokyo University Library. To promote utilization of library materials and to offer the best way of access, we executed the first Six-Year Plan from 2004 to 2009, and we have furthermore settled on the second Six-Year Plan from 2010, as the

online catalog data input project for the whole university's usage. We succeeded in adding 5,170,000 volumes of online catalog data, thus making the input rate 80 % compared to the total amount of books at the end of 2010.

We expect that our work will require more time than before because of the necessity of creating bibliography data. However, we are going to correspond to this condition flexibly and keep the input work going continuously.



Support of the common course "Introduction to Information Retrieval"

"Introduction to Information Retrieval" is a subject which was suggested and started in 1998 by the Kyoto University Library and Dr. Makoto Nagao, who was the president of the Kyoto University at the time. It is the first special course with regard to academic informative literacy offered to all students in Kyoto University. There are relay-type lectures given by some teachers about classification, catalog and so on. Also,

the students who join this course utilize computers and the library for practical learning. About 10 staff members belonging to each departmental library, usually young people, help the teachers by preparing assignments and supporting students in class.

This subject has been well assessed by students, so we are going to continue it with the accommodation to change the informative environment.



Approach to preservation of library resource

The Research Development Laboratory of the Kyoto University Library suggested “The Kyoto University Library Network; a prospectus of environmental research of preservation”, and enforced “a questionnaire of environment of Preservation owned by the Kyoto University Library Network” in January 2007, having an accident with mold and water in a stack room of some Libraries serve as turning point.

This questionnaire was analyzed by the Section on Preservation and Conservation, which was founded under the Committee on Reform of Library Management and Services in Kyoto University Library Network, and they created a report in March, 2008.

After create the report, the Section on Preservation and Conservation, has been pursuing the followings:

- Revision of “the manual of environmental

service of preservation library resource (environment of a stack room)” and the supplement of “a checklist of environment of a stack room” and also research, totalisation, and suggestions on improvement.

- Making of “the manual of environmental service of preservation library resource (micro film)” and the supplement “a checklist of micro film”, and also research, totalisation, and suggestions on improvement.
- Disclosure of the above-mentioned manuals for KURENAI, Kyoto University Research Information Repository

Also, we aim to improve preservation skills of each staff member through enforcing practical training of preservation resource in corporation with the Section on Staff Training and Development.

Retention management of intellectual property

Approach to preservation of library resource

Restoration of rare books

Practical training in fiscal 2010 (preservation)

"Easy repairing for beginners"

(Held on November 16, 2010)

- A video and lecture material are released on Kyoto University OpenCourseWare(OCW)
- Users can also access the OCW from Kyoto University Research Information Repository (KURENAI).



Restoration of precious books

Kyoto University owns a lot of precious classical literatures and ancient manuscripts including national treasure and important cultural artifacts. Because almost all these are originals, they are utilized for research, introduced as a result of academic investigation, and submitted to perusal. However, some of them have damage by being moth-eaten and by deterioration due to long term storage and utilization. As for these severely damaged materials, we have discussed and enforced restoration, especially of

precious classical literatures and ancient manuscripts, which need to be restored immediately for the sake of making these books durable enough to be utilized as educational materials. This work was done in the capacity of the university.

In 2010, we enforced restoration and repair work of precious classical literature and ancient manuscripts and so on, which are owned by the Kyoto University Library, the Kyoto University Museum and the Graduate School of Letters.

Repair materials in fiscal 2010

Graduate School of Letters

- Rare Books “Hourai Monogatari” 2 books, “Okuraryu Souaigatari” 1book, “Novvs Atlas” 2 books, Total 3 volumes 5 books.

University Museum

- “Yawata Chausuyama Kohun hunagata sekkan”

University Library

- General rare books “Ekisho” 5 books, “Rekidai Heiyou” 12 books, Nakanoin Bunko “Gosenwakashu (Teikabon)” 1 book, “Hyakunin Isshu Kikigaki sou” 6 books, -Total 4 volumes,24 books.



Constructing a system of information services

Campus Delivery Service



Campus Delivery Service at the library, and sending back service among campuses

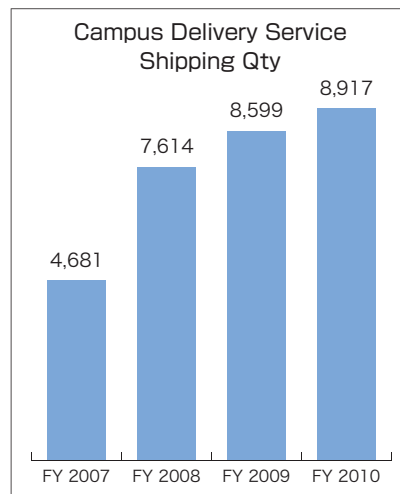
The "Campus Delivery Service" is a service for the university members. Users can have books send to them from distant campuses without an economical and temporal burden. The following services have been in effect since July, 2007;

1. A delivery trader goes around delivering at 3 areas: Yoshida area, Katsura area and Uji area (exclusive delivery service for books)
2. Direct delivery to distant places (courier service)

Due to the combination of these two delivery systems, the libraries and facilities, which belong to the Kyoto University, are almost covered, and the areas that used to be impossible to deliver to were included into the area

of delivery. This service allows users to order materials that can be picked up at the nearest library free of charge safely and with certainty.

Furthermore, since June, 2009, a "sending back-service among campuses" utilizing the new delivery service has begun. This is a service that has existed for some time and which we were requested to set up. It allows users to return materials borrowed from a distant campus at the nearest library. This improves the usability for the users in our university.



Approach to the development of potential ability and training

It is necessary for the Library Network to make our business and service trusted and appreciated by our users. Therefore, improving the quality of the staff is increasingly important.

For that reason, we founded Section on Staff Training and Development under the Committee on Reform of

Library Management and Service in Kyoto University Library Network. Each year, they plan and organize various training events and lecture meetings for the sake of the development of potential ability and the improvement of quality.

FY 2010 Training and Conference

April 28 May 19,28 June 2	Library System Operation Training	Acquisition, ILL, Cataloging, Circulation
May 14	New Library Staff training	
September 28	Seminar on the Protection of Personal Information	
October 19	FY 2010 1st Open Conference	“Will iPad change the library?": Future Publishing, Education, University Library”
November 5	Job training “public services”	“Learning presentation tips from a professional - for guidance services”
November 16	Job training, “preservation”	“Easy repairing for beginners”
December 7	Job training, “cataloging”	“Cataloging Tips : How to verify, fix and create bibliographic data for books”
February 23	Seminar (disability assistance)	“Cooperation with the support of colleagues with disabilities, library patrons with disabilities - basic knowledge of the case required”



Job training "public services" "Learning presentation tips from a professional" (group work)

Improvement of staff skills

Approach to the development of potential ability and training



Accumulation and transmission of intellectual results

Institutional repository



Kyoto University Research Information Repository "KURENAI"

We, the Kyoto University Library Network founded Kyoto University Research Information Repository, "KURENAI", for the sake of transmitting research results and education in Kyoto University, and since 2006, it has been open to the public through the web.

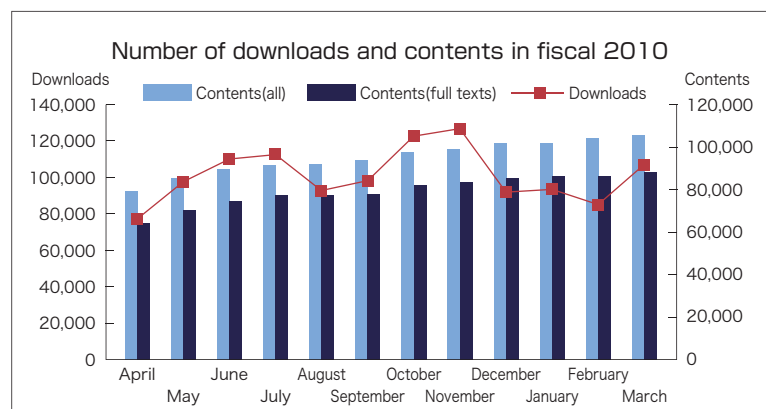
On "KURENAI", results of research and education (articles published in a scientific journal, thesis and dissertations, departmental bulletin papers reports, for grants-in-aid for scientific research and so on) at the Kyoto University are collected as electronic documents and



are stored permanently. These are also open to the public free of charge.

Through this project, we, the Library Network, support the university's medium-term goals and plan a "giving back research results to the community" and "through opening academic information, discharge our duty of accountability to the community", and are having research activities and researchers in our university appeal widely to the society.

The number of items downloaded in 2010 was over 1,210,000, and the average number of accesses was about 100,000 per month.



The main topics for FY 2010 Kyoto University Research Information Repository

- The number topped 70,000 Charted papers. (2010.5)
- Registration of summary of the dissertation has begun. (2010.9)
- The number topped 80,000 Charted papers. (2010.10)
- Ranked 1st in Japan, 6th in the world in Ranking Web of World Repositories by the Consejo Superior de Investigaciones Científicas(Spain). (2011.1)

The most utilized content in 2010 was the introduction book of the university, "MANGA Kyoto University". In addition, departmental bulletin papers and dissertations and thesis(related engineering and medical care), as well as the books and articles related to oriental history (e.g."Selection from stone inscription in the Wei and Jin

dynasties: General remark and annotation"), are often utilized.

In Kyoto University Research Information Repository, to actively collect and disseminate a variety of research papers, we strive to give more convenient access to the university research.

Access Ranking 2010

Rank	Classification	Author	Title	PRESS etc.	Access
1	Books	Kyoto University and Kyoto Seika University MANGA Project	MANGA Kyoto University		4,763
2	Books	Three Kingdoms era documents unearthed letter Group	Selection from stone inscription in the Wei and Jin dynasties : general remark and annotation(in Japanese)	The Institute for Research in Humanities 2005	2,900
3	Departmental Bulletin Paper	Matsukane, Teruhisa Takenaga, Yasuhiko	On the NP-completeness of Generalized Puyo Puyo (Computer Science Theory and Applications)(in Japanese)	RIMS Kôkyûroku 1426, 2005	2,063
4	Departmental Bulletin Paper	Sanma, Shoji Ijuin, Masumi Okajima, Eigoro Matsuyama, Ikuko Masuyama, Haruyuki	Clitoroplasty, The surgical correction of the enlarged clitoris due to adrenogenital Syndrome: A case report(in Japanese)	Acta Urologica Japonica 1980,26(7),875-880	2,048
5	Books	Tao, Masao	Study of "Organization man" : Theory and practice of organizational commitment (in Japanese)	Kyoto University Press, 1997	1,878
6	Conference paper	East Asian Center for Informatics in Humanities, the 21st Century COE, Kyoto University	Proceedings of the International Symposium Religions in Chinese Script Perspectives for Textual Research(in Japanese)	Institute for Research in Humanities,2004	1,782
7	Presentation	Yuasa, Toshihiko Nakamura, Satoshi Irie, Shin	iPad will change the library?: Future Publishing, Education, University Library: 1st Conference FY2010 Kyoto University Library Network(in Japanese)	Kyoto University Library Network,2010	1,776
8	Thesis or Dissertation	Kawaharamura Toshiyuki ,	Study of zinc oxide thin film growth and the mist CVD method (in Japanese)	Doctor (Engineering) , 2008	1,625
9	Departmental Bulletin Paper	Chabata, Takayuki Katada, Yukihiko	A case of adrenal cancer with sexual precocity(in Japanese)	Acta Urologica Japonica; 1967, 13(7),537-543	1,568
10	Article		Annual Report of the Institute for Virus Research, Kyoto University	Volume.51, 2008	1,510



KULINE Service ~ To enhance Web Services ~

In the Library Network, there are several online services built around an online public access catalog system, "KULINE." Those are usually called KULINE Service as a comprehensive term.

The KULINE Service provides the centralized retrieval system for materials available in Kyoto University, such as electronic books and journals, as well as paper books and journals, without distinguishing between electronic and paper media.

KULINE Service includes an online reservation system where user can reserve materials on loan at the time as well as an application system for the Interlibrary Loan(ILL) where one can order materials which are not held in Kyoto University but in other libraries. In addition, it also includes KULINE alert service where users can receive emails with information about materials which fulfill the conditions once the users register keywords of their interest. Thus also, we help in case the user are not able to find the materials searched for, In MyKULINE, users can confirm the materials on loan and renew their loan periods.

Users are also able to utilize OPAC system, the renewal of one's loan term and online reservation through a mobile phone(Mobile KULINE).

Furthermore, all the students can use MyKULINE from the "Common Portal for All Students" system provided by Institute for Information Management and Communication.

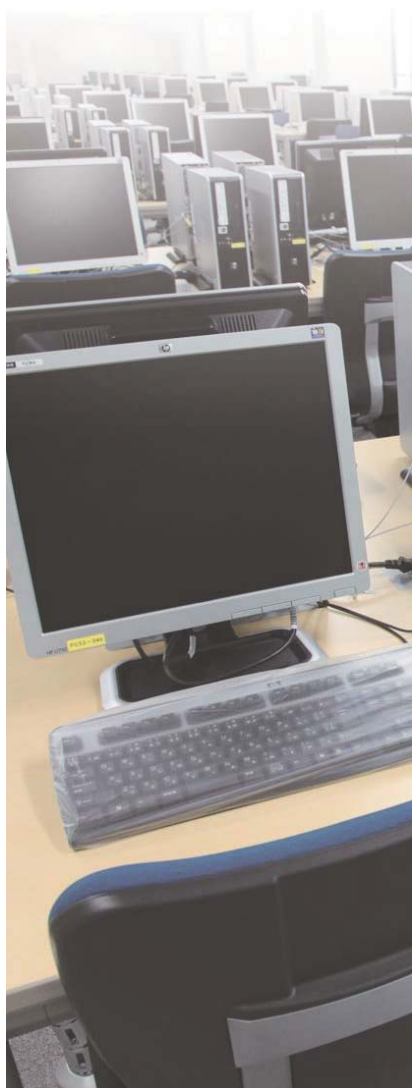
One of the missions of the Library Network is to develop a service for the sake of finding and acquiring materials which are appropriately demanded by users. The role of KULINE Service is to materialize it online. Today, a lot of useful and convenient web services are coming out. The Library Network attempts to grasp the styles and potential demands of user who are familiar with those web services, and

then tries to improve the functionality and user interface of system accordingly.

In addition, one of the tasks of the KULINE Service is to provide an intuitive simple service without the need for explanation. In Kyoto University, not only the Library Network but also many departmental libraries are providing their own services, which makes the whole library system more complicated. Therefore, we consider that it is important to provide KULINE Services as part of university-wide services. In order to perform the task, the Library Network attempts to provide better KULINE Service by collecting ideas from not only other university systems but also good web services available on the internet.

Customer support system

KULINE Service



Overseas research training for library staff

The Library Network, based on “Kyoto University International Strategy,” annually conducts overseas research training for library staff with support by a grant for primary reinforcement by “The Organization for the Promotion of International Relations.” The staff members who join this training need to decide their own research themes, negotiate with overseas host libraries, and conduct their researches. After returning from the training, they write a report based on the results of their researches. The report will be published on the websites of both “The Organization for the Promotion of International Relations” and “Kyoto University Research Information Repository (KURENAI)”. In addition, the results are shared with other staff members by holding debriefing meetings.



John P. Roberts Research Library
(University of Toronto, Canada)

Visiting places in the past:

Canada (University of Toronto etc.) 2010
United Kingdom (University of Cambridge etc.) 2009
China (Peking University etc.) 2008
Korea (Seoul National University etc.) 2007
United States of America (Columbia University etc.) 2006

Collecting information and feedback

Overseas research training for library staff

Efforts to utilize user's opinion

Efforts to utilize user's opinion

~ User Roundtable ~

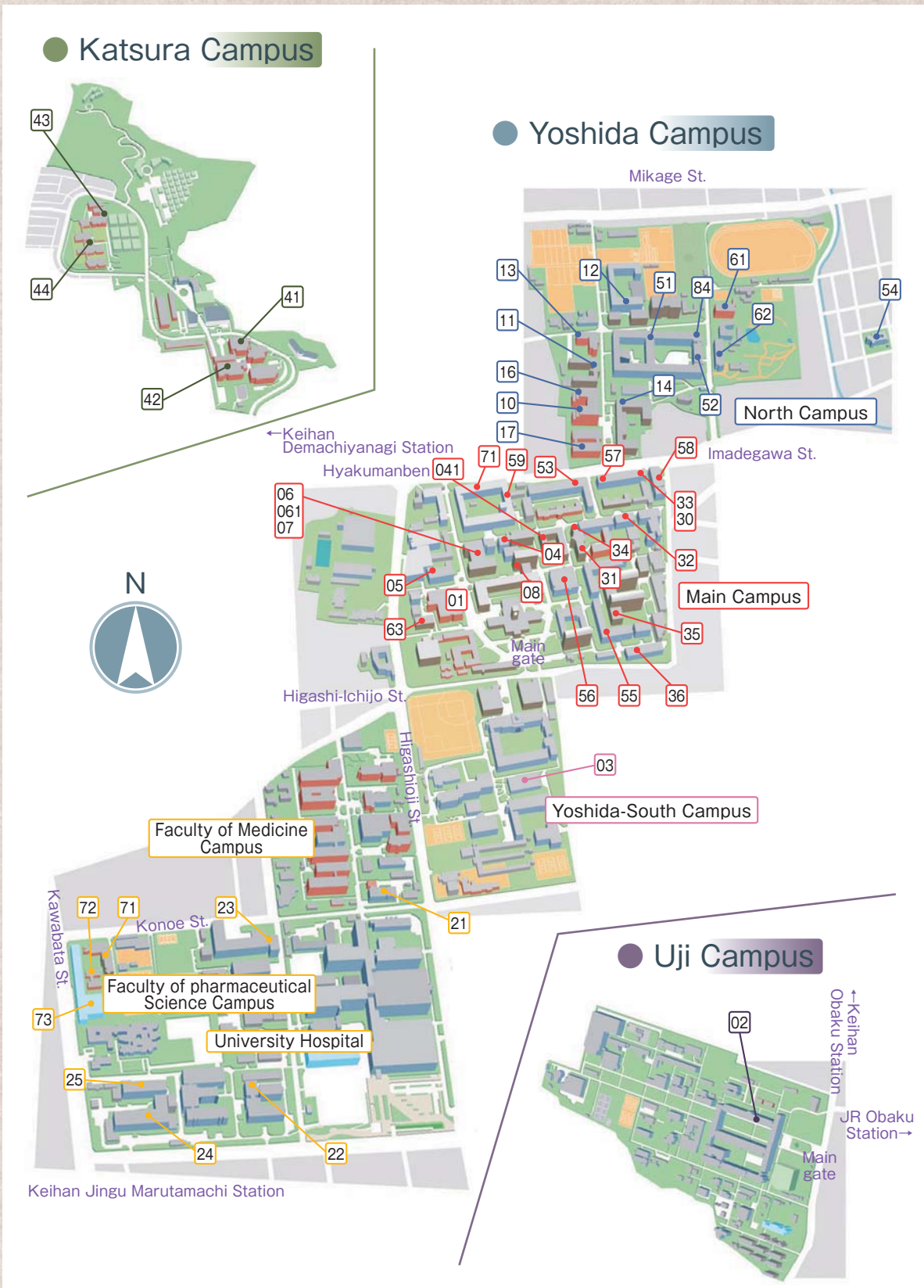
The Library Network is making efforts to utilize opinions of users for the sake of library services at all times. In the fiscal year 2010, “User Roundtable” was held twice with Japanese undergraduate and graduate students in May, and foreign students in January.

The information and opinions collected there offer feedback to each library in order to improve its service and environment. In addition, improvements we achieved will be reported in the Kyoto University Library Network Bulletin, “Seishu.”



User Roundtable with foreign students







● Yoshida Campus

Main Campus

(TEL = Represent four-digit extension number. In the number of outside, please add the four-digit after "075-753 -****".)

Library	TEL
01 Main Library	2632
04 Letters Library	2715
041 Laj	2461
05 Education	3016
06 Law	3114
061 Law. Intl. Doc. Cecter	3109
07 Economics	3412
08 Econ. Res. Office	3416
30 Eng. (Yoshida)	5048
31 Eng. Chem. (Yoshida)	5556
32 Eng. Elec. (Yoshida)	5360
33 Eng. Arch. (Yoshida)	5761
34 Eng. Global (Yoshida)	5118
35 Eng. Phys. (Yoshida)	5187
36 Eng. Aero.	5810
53 Jimbun	6909
55 Energy	3591
56 Informatics	5390
57 GES [Chikyu Kankyo]	5631
58 ACCMS [Media]	7416
59 EPRC [Kankyo Hozen]	7701
63 KIER [Keiken]	7107
71 ASAFAS [Asia]	9638

North Campus

(TEL = Represent four-digit extension number. In the outside number, please add the four-digit after "075-753 -****".)

Library	TEL
10 Science	3622
11 Sci. Mathematics	3703
12 Sci. Physics	3803
13 Sci. Astronomy	3900
14 Sci. Earth Planetary	3920
16 Sci. Chemistry	3966
17 Sci. Biology	4082
51 Agriculture	6016
52 Agr. Nat. Res. Econ.	6201
54 Jinse	6990
61 Yukawa [Kisoken]	7007
62 RIMS [Suken]	7223
84 FSERC Forest	6432

Yoshida-South Campus

(TEL = Represent four-digit extension number. In the outside number, please add the four-digit after "075-753 ****".)

Library	TEL
03 Jinkan Library	6525
Faculty of Medicine, Pharmaceutical Science and University Hospital (Represent four-digit extension number. In the outside number, please add the four-digit after "075-753 -****".)	
Library	TEL
21 Medical Library	4313
22 Med. Health Sci.	075-751-3911
23 Pharmacy	4595
24 Frontier Sci. [Saiseiken]	075-751-3822
25 Virus	075-751-4006
71 ASAFAS [Africa]	7816
72 CSEAS [Tohnan Asia]	7306
73 CIAS [Chiikiken]	9617

● Katsura Campus

(TEL = Represent six-digit extension number. In the outside number, please add the four-digit after "075-383 -****".)

Library	TEL
41 Eng. Chem. (Katsura)	15-2581
42 Eng. Elec. (Katsura)	15-2344
43 Eng. Arch. (Katsura)	15-2962
44 Eng. Global (Katsura)	15-3146

● Uji Campus

Library	TEL
02 Uji Library	0774-38-3010

● Other Campuses

Library	TEL
RRI [Genshiro]	072-451-2311
PRI [Reichorui]	0568-63-0516
CER [Seitaigaku]	077-549-8230
FSERC Seto	0739-42-3515



<http://www.kulib.kyoto-u.ac.jp/>



published in 2011

Edited and published : by Kyoto University Library Network
Yoshida-Honmachi, Sakyo-ku, Kyoto 606-8501, JAPAN
TEL.+81-75-753-2613 FAX.+81-75-753-2629