



You can start it
from any point.

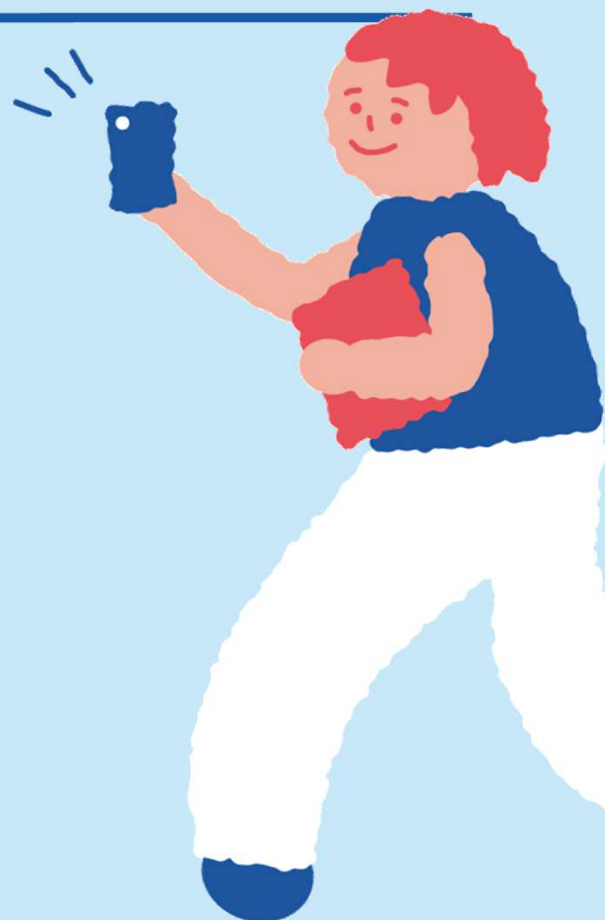
Kyoto University Library Network Stamp Collecting

In Open Campus 2025

2025.8.7_{Thu.} - 8_{Fri.}

Redeem your reward at Main Library between 9:30 am and 5:00 pm.

Visit several libraries in Kyoto University and
collect stamps by scanning the posted
QR codes with your smartphone!



How to play

1. Find the library you want to visit on the map.
2. Head to the library!
3. Use the standard camera on your smartphone to scan the QR code displayed in the library.
4. Get a stamp!
5. Once you have collected the required number of stamps, you can get the participation rewards from "Rewards" (gift box icon)!

Contact us

Kyoto University Library Network 075-753-2636

KU Libraries Map

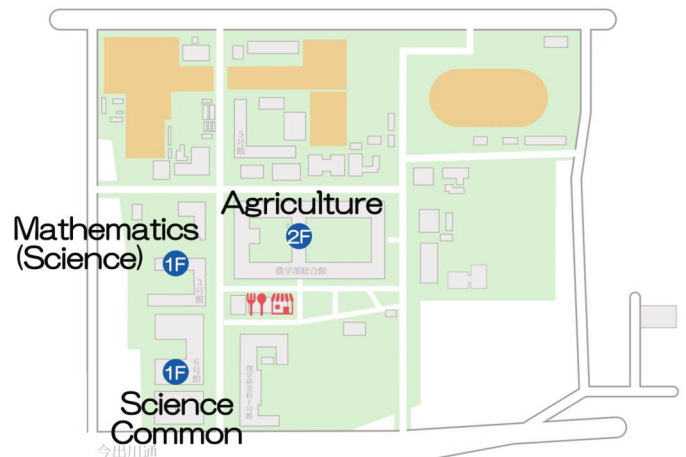
Depending on the number of stamps you collect, you can receive original library wallpapers and goods!

▼ How to Redeem your reward

Place: Counter of Main Library (1F)

Hour: 9:30 am - 5:00 pm

North Campus



Main Campus

Please enter from the west side of Faculty of Edu. Main Bldg.

Reward redemption location of library goods

Education 1F

Main Lib.

Letters (Engineering) 3F

Infomatics 4F

South (Engineering) 1F

Please enter through the door on the west side of Faculty of Eng. Bldg. No 3.

Yoshida-South Campus

Yoshida-South Lib.

Medical Lib.

Pharmaceutical Sciences 1F

Library is on the east side of Graduate School of Pharmaceutical Sciences Main Bldg. Please enter from Konoe Dori.

 ... Dining
 ... Shop

Faculty of Medicine Campus Faculty of Pharmaceutical Sciences Campus